



NOTICE OF OPPORTUNITY

Planet Fellowship Program

Application Deadline:

March 31, 2025

Academic Calendar Years 2024-2025 and 2025-2026

Questions or inquiries regarding this NOO can be directed to:
partnerships@taylorgeospatial.org

Background

Founded in 2022, the Taylor Geospatial Institute (TGI) is a first of its kind entity in the geospatial ecosystem – designed to fuel research, collaboration, and impact. With a legacy investment from Andrew C. Taylor and the commitment of 8 academic and research institutions led by Saint Louis University, TGI is the cornerstone of establishing a global center of geospatial excellence in St. Louis. TGI aims to be a leading global geospatial institute positioned for collaboration, impact, and community building. Together, we will spark a revolution in geospatial science and technology to solve global problems. For more information on the Institute, please visit www.taylorgeospatial.org.

To achieve this goal, the TGI offers a Planet Fellowship in collaboration with and through the generosity of Planet Labs that is designed to support graduate students' research projects in core geospatial science and applied domains. The purpose of the Taylor Geospatial Institute Planet Fellowship program is to help improve the research work of our students and promote the use of Planet datasets to address grand societal challenges, develop the next generation of scientific leaders, and catalyze regional collaboration to accelerate the St. Louis region's development as a global geospatial center of excellence. Underrepresented groups and women in geospatial sciences are encouraged to apply.

Research Priorities & Scope

TGI aims to address grand societal challenges in food systems, GeoAI, health systems, and national security using cutting-edge geospatial technologies, data, and analytics and to build upon the broad existing research strengths in the St. Louis region. The goal is to advance core geospatial science and adjacent fields while fostering research that can improve the aforementioned areas.

Applicants are encouraged to read the research priority areas provided in Appendix A.

Fellowship proposals should have a strong geospatial component that will be score across four criteria:

1. Innovation in Geospatial Science

- a. Score based on the proposal's originality and potential to advance geospatial science through new tools, algorithms, technologies, or platforms.
- b. Higher scores for proposals that introduce novel and technically feasible approaches to data generation, analysis, or visualization.

2. Societal Impact & Relevance

- a. Score based on the proposal's alignment with TGI's mission to address societal challenges (food security, health equity, resilience, etc.) and Planet's goals for social impact.

- b. Higher scores for proposals that clearly demonstrate how outcomes could address critical societal issues, with strong alignment to TGI and Planet's objectives.

3. Project Design & Feasibility

- a. Score based on the proposal's alignment with TGI's mission to address societal challenges (food security, GeoAI, health equity, resilience, etc.) and Planet's goals for social impact.

4. Effective Use of Planet Data

- a. Score based on how well Planet datasets are integrated into the research. Proposals should specify how these datasets contribute uniquely to the project's goals.
- b. Higher scores for thoughtful, strategic integration of Planet data that maximizes its impact and relevance to the research questions.

Proposals that aim to conduct applications, projects, or fundamental research that do not require Planet data will be deemed non-compliant and either returned without review or declined after review.

The IP developed with the Planet fellowship is treated in accordance with the policies of the awardees' home institutions.

Details of the Fellowship Program

The successful candidate(s) are expected to use Planet's data sets as a substantial source of information and evidence in their research.

Ideal candidates will have research interest in geospatial science, or a related field, applied to one of the priority research areas outlined in Appendix A (core GIS, GeoAI, food systems, health systems, and national security).

Project Budget

The fellowship is \$10,000 for one year. The funds are received and managed by the Fellow's institution. Funds may be used to fund personnel which may be paid to the fellow as a stipend or used to support collaborators in the project (e.g., student workers). Funds may also be used for expenses associated with conducting research (e.g., fieldwork, data collection, payment to subjects, survey expenses, software, hardware, data transcription, travel, and expenses incurred at sites away from the home institution) in accordance with the Fellow's home institution's policies.

Institutional overhead and tuition reimbursement are not supported.

Application Process

Applications will be accepted until close of business on March 31, 2025. Applications should be submitted by applicants directly and include the approval signature of their research office identified on the cover page (Appendix B). The Fellowship application materials should be submitted by email to partnerships@taylorgeospatial.org.

The applicant must complete the requested application information and must also include the following:

1. A cover page that includes the proposal title, Principal Investigator name, Principal Investigator contact information, and approval signature of the applicant's Research Office as shown in Appendix B.
2. A résumé/curriculum vitae
3. Up to 6-page research proposal (title, contact info, project summary, research plan including specific aims, preliminary work, potential outcomes, and potential faculty advisor at the affiliated institution).
4. Project Summary must not exceed one (1) single-spaced page.
5. Project Description must not exceed five (5) single-spaced pages. (Must include description of how the Planet datasets will be used.)
6. Principal Investigator: The dissertation advisor or another qualified home-institution faculty member should be listed as the Principal Investigator; the applicant should be listed as the Co-Principal Investigator.
7. One (1) letter of recommendation from the Principal Investigator (faculty mentor) about the proposal, the student's academic potential, and commitment to supervise the student's research.

APPENDIX A – TGI & POTENTIAL RESEARCH FOCUS AREAS

Overview

Humanity is facing unprecedented challenges through natural disasters, climate change, and more, but there is also rapid positive change. TGI is confronting these challenges with novel solutions, and geospatial is at the center of it all. Building upon the St. Louis region's competitive strengths, the proposal for this fellowship should aim to address grand societal challenges in food systems, GeoAI, health systems, and national security with cutting-edge data analytics techniques. (Figure 1).

OUR VISION

To spark a revolution in geospatial science and technology to solve global problems.

OUR MISSION

We assemble multi-institutional collaborative initiatives that apply geospatial research and innovation and deliver results on complex challenges.

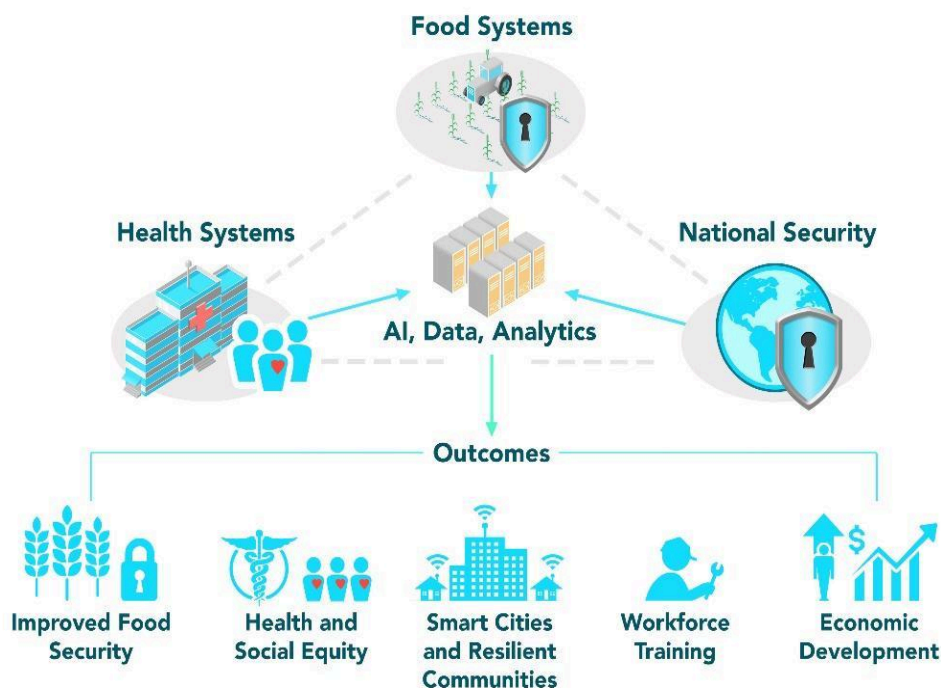


Figure 1: Addressing Grand Societal Challenges and Outcomes

APPENDIX B – SAMPLE COVER PAGE

DD MM YYYY

Dr. Nadine Alameh, Executive Director

Taylor Geospatial Institute

<https://taylorgeospatial.org>

partnerships@taylorgeospatial.org

SUBJECT: Taylor Geospatial Institute Planet Fellowship

Title: “Your project title”

Dear Dr Alameh,

As the Authorized Research Office Representative, I want to officially acknowledge [PI Institution]’s concurrence with the submission of PI [PI Name]’s grant proposal [“Your project title”], which has been approved by this office. Please find attached the PDF for the full proposal submission.

With best regards,

Project start and end date: DAY MONTH YEAR to DAY MONTH YEAR

Signature

Signature of the PI

Name

[PI name], Principal Investigator

Title

Title

Authorized Signatory Official

[PI Institution]

Office of the Vice Chancellor for Research

[PI Institution]

Phone:

Phone:

Email:

Email:

Change Log

Ver 12/12/2024 - Original NOO released on Dec. 12, 2024